



GAT MONTHLY MEMBERSHIP PROGRESS REPORT

Results as of: 1/31/2023

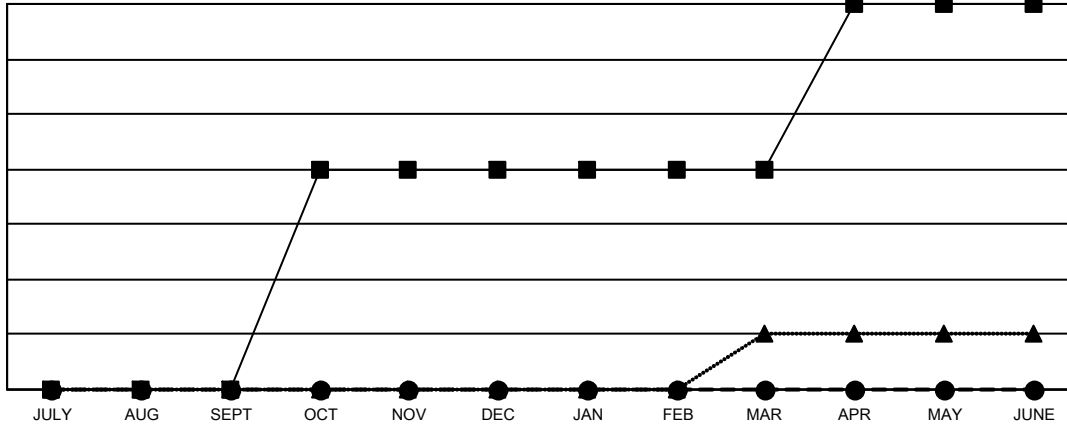
Multiple District 8

LOCATION: LOUISIANA

Clubs			
RESULTS FOR 2022-2023			
QUARTER	NEW CLUB GOAL	NEW CLUBS	DROPPED CLUBS
JULY/AUG/SEPT	0	0	1
OCT/NOV/DEC	4	0	2
JAN/FEB/MAR	0	0	0
APR/MAY/JUNE	3	0	0

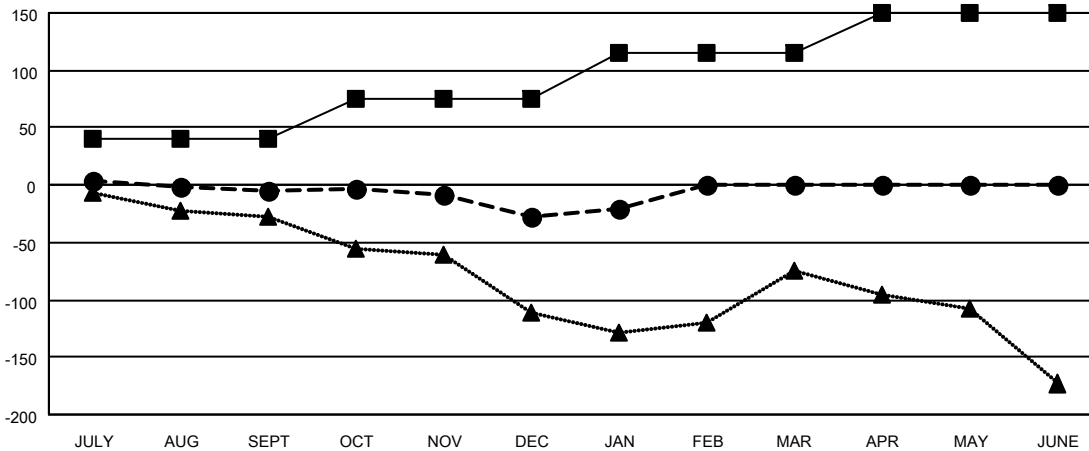
Members			
RESULTS FOR 2022-2023			
QUARTER	MEMBER GROWTH NET GOAL	MEMBER GROWTH ACTUAL	DROPPED MEMBERS ACTUAL (including transfers)
JULY/AUG/SEPT	40	133	111
OCT/NOV/DEC	35	96	113
JAN/FEB/MAR	40	31	20
APR/MAY/JUNE	35	0	0

GOALS AND ACTUAL NEW CLUBS CUMULATIVE



- CURRENT YEAR GOALS FOR NEW CLUBS
- CURRENT YEAR ACTUAL NEW CLUBS
- ▲- LAST YEAR ACTUAL NEW CLUBS

GOALS AND ACTUAL MEMBERS CUMULATIVE



- MEMBER GROWTH NET GOAL
- MEMBER GROWTH ACTUAL
- ▲- LAST YEAR MEMBERSHIP ACTUAL

DROPPED CLUBS: 3	
DROPPED MEMBERS	
DECEASED	33
CLUB CANCELLED	44
OTHER	167
TOTAL	244

63 CLUBS OF 132 ADDED 1 OR MORE NEW MEMBERS

[CLICK HERE FOR CUMULATIVE MEMBERSHIP DATA](#)

GENDER DISTRIBUTION	
MALE	2,245 (65.32%)
FEMALE	1,190 (34.62%)
NON BINARY	0 (0.00%)
PREFER NOT TO ANSWER	2 (0.06%)
TOTAL FAMILY UNIT MEMBERS	593
FAMILY MEMBERS PAYING HALF DUES	309